

**QUIC-RELEASE® OXYGEN TANK SYSTEM**  
**MODEL QR-OTS-M\_\_-A**  
**PARTS AND MOUNTING INFORMATION**

- **This unit is designed for use with the standard 36-3/8" L aluminum "M" cylinder only.**
- **It will not work with "M" cylinders shorter or longer than 36-3/8" L and it will not work with "G" or "H" cylinders.**
- Lowers cylinder safely and quickly to floor level for easy replacement.
- Powered by a single electric actuator meeting UL-1500 Standard for Ignition Protection.
- The unit requires a 12 VDC with 20 amp circuit. See page 3 for optional hand held switch.
- The safety latch holds the unit firmly in place.
- Operating latch is on the opposite side of the motor.
- Equipped with a backdriving actuator that prevents unit from holding weight of the apparatus if air suspension is lowered.



Designed specifically for Aluminum "M" cylinders. This system requires a mounting area 15-1/2" W x 40-1/2" H\* x 12-1/8" D Minimum door opening is 12" \*Not including valve

MODEL	DESCRIPTION	WT./@ IN LBS.
QR-OTS-MR-A	System for "M" cylinder - motor on right	93.0
QR-OTS-ML-A	System for "M" cylinder - motor on left	93.0
QR-OTS-MR-A-HHS	System with hand-held switch	94.4
QR-OTS-ML-A-HHS	System with hand-held switch	94.4
QR-HSS/B	Hand-held switch with bracket	1.4

## Mounting Recommendations for Model OR-OTS-Mx-A Oxygen Tank Systems:

- **IMPORTANT:** This bracket has been tested to meet SAE-J3043, AMD Standard 003 and GSA KKK-A-1822E. This should be taken into consideration when selecting the mounting location.
- **Mounting Hardware:** We recommend use of 3/8" diameter hex head bolts Grade 8 or better in eight (8) places to mount the base casting.
- **Air Hose:** Should be long enough to allow removal of air hose connection when the cylinder has been lowered to the ground.

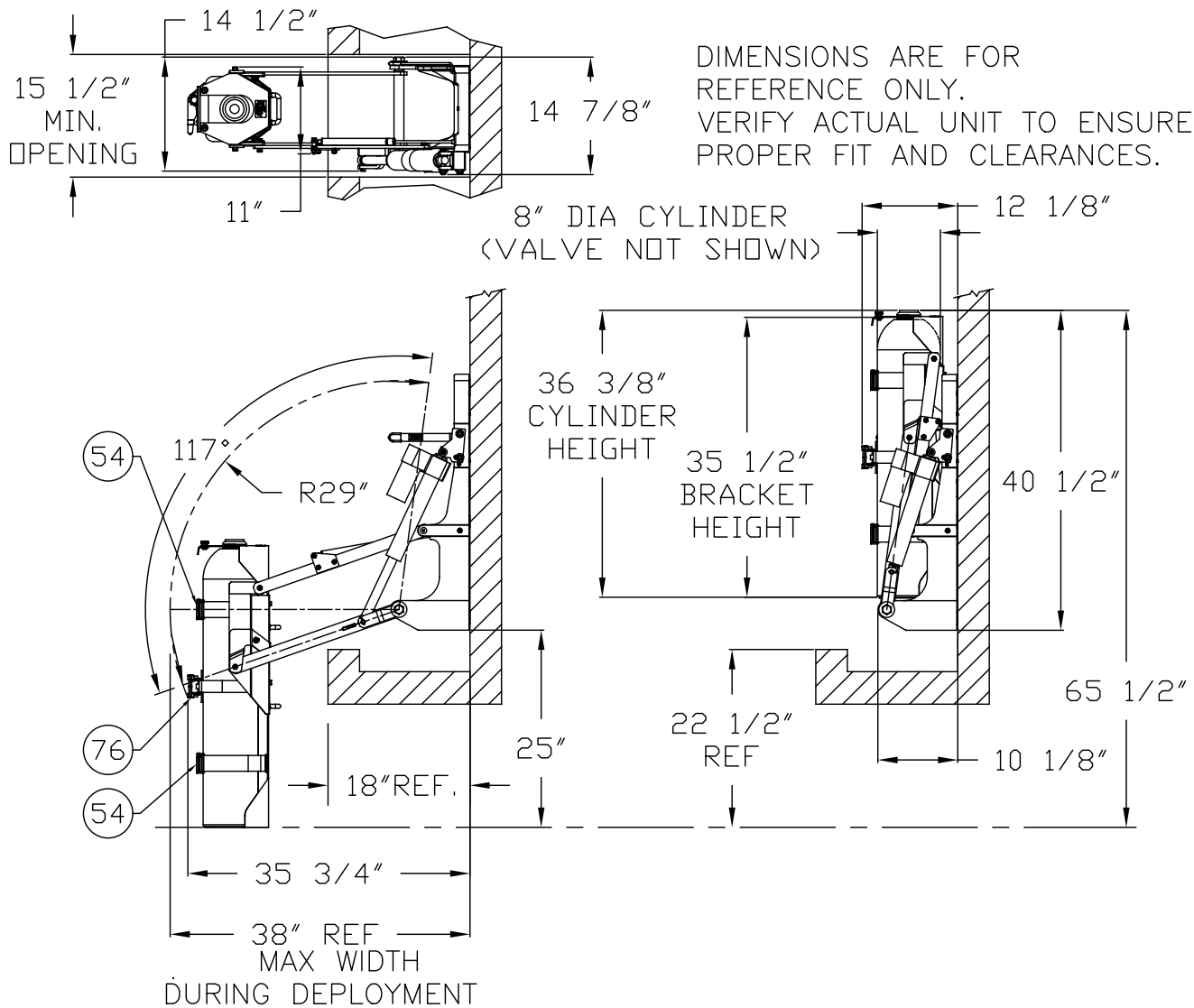


Figure 1

## Periodical Maintenance:

- Inspect and replace straps when showing signs of wear or fraying. Otherwise, they should be replaced every 3 years to ensure adequate retention.
- We recommend lubricating all pivot points with Krytox™ GPL 226 Grease.  
~Locations are noted on the following pages as item#74.

**Electrical Schematic:**

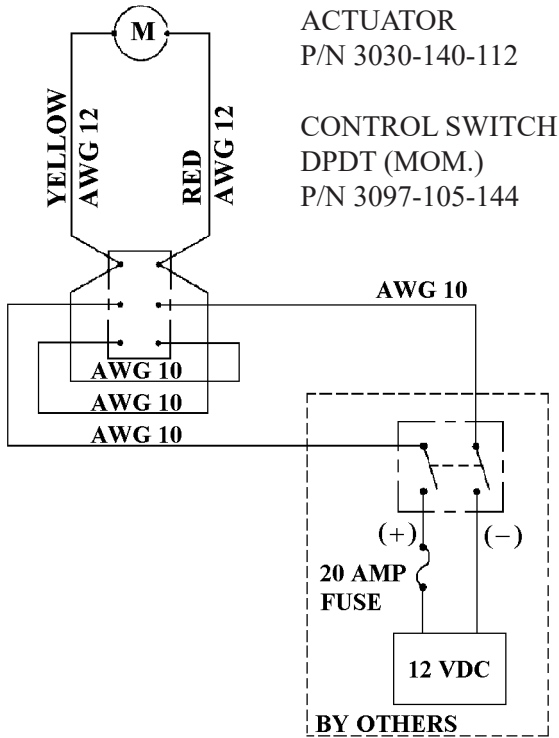


Figure 2



Hand-held switch may be ordered alone (QR-HHS/B) or with a sytem in place of the standard toggle switch. Comes with mounting bracket.

**Wiring Schematic for Hand-Held Switch:**

FIELD WIRING CONNECTIONS	
CABLE	CONNECT TO:
BLACK	12VDC (+)
GREEN	12VDC (-)
WHITE	ACTUATOR (YELLOW)
RED	ACTUATOR (RED)

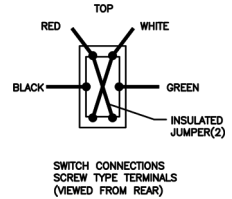
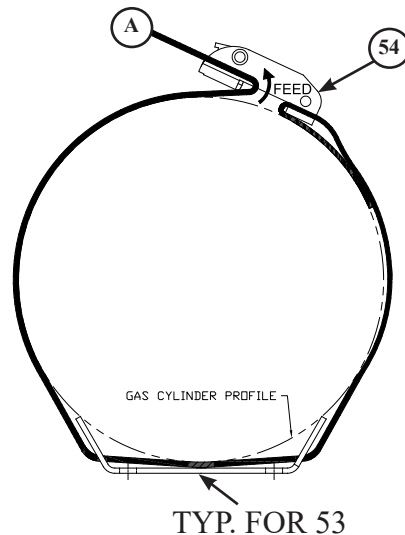


Figure 3

**Proper threading of outside strap through the buckle assembly:**

**IMPORTANT:**

Running end of strap "A" goes under latch and back through front of buckle between retainer and thumb release.

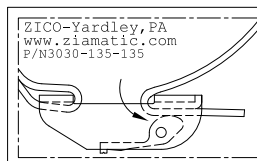


54  
Outside Straps  
P/N 3030-135-135

Ratchet Strap  
P/N 3030-135-138

76

*Straps should be inspected frequently and replaced when showing any wear or fraying. Otherwise they should be replaced every 3 years.*



Strap threading label sewn on strap, near buckle

## Parts Reference and Diagrams:

ITEM #	PART #	DESCRIPTION	Qty.
1	3030-145-101	BASE CASTING	1
2	3030-144-103	LIFTING ARM WELDMENT	1
3	3030-144-111	ADAPTER, LIFTING ARM TO TANK BRACKET	1
4	3030-140-113	POSITIONING ARM	1
5	3030-140-116	RUBBER PAD 1" X 4 1/2" X 1/8" THICK	2
6	3030-140-117	UPPER MOUNTING BRACKET, ACTUATOR	1
7	3030-140-119	HOUSING, LOCKING MECHANISM	1
8	3030-140-121	SLIDER, LOCKING MECHANISM	1
9	3030-140-123	HOOK, LOCKING MECHANISM	2
10	3030-144-125	HANDLE, LOCKING MECHANISM	1
11	3030-140-127	SLEEVE, LIFTING ARM SCREW(Item#13)	2
12	9014-117500	WASHER, 3/4 ID NOM, FLAT	2
13	9010-107540	SCREW, 3/4-10 X 2 1/2" HEX HD C/S, ZPS	2
14	3030-140-149	DAMPER, HYDRAULIC EXTENSION	1
16	9018-103716	SCREW, 3/8-16 x 1" HEX HD GR8	2
17	9013-173700	NUT, 3/8-16 HEX HD NYLON LOCK	4
18	9110-363718	SCREW, 3/8-16x1 1/8" FLAT HEX DRV HD 82° C/S, SS	1
20	9018-103116	SCREW, 5/16-18 X 1" HEX HD GR 8	8
21	9010-315036	SHOULDER SCREW, Ø1/2 x 2 1/4" x 3/8-16, HEX DRIVE, ZPS	1
22	9080-005051	CLEVIS PIN, Ø1/2" x 3 3/16"	1
23	9018-104364	SCREW, 7/16-14 x 4" HEX HD GR8	2
24	9010-382512	SET SCREW, 1/4-20x3/4" CUP POINT	2
26	3030-140-141	SPACER, 11/32ID x 1/2OD x 7/16	2
28	9014-203100	SPLIT LOCK WASHER, 5/16 ID, ZPS	16
29	3030-145-127	MOUNTING PLATE, DAMPER	1
30	9010-103110	SCREW, 5/16-18 X 5/8 HEX HD, ZPS	10
31	3030-145-131	SPACER, 1 1/8"IDX 1 5/8"ODx1/4LG, AL	2
32	9010-103128	SCREW, 5/16-18 x 1 3/4" HEX HD, ZPS	3
33	3030-140-112	ACTUATOR, ELECTRIC	1
34	3030-144-182	CAP, HANDLE	1
37	3030-140-147	RETAINER, LATCH HANDLE	1
38	3030-140-157	SPACER, .328"ID x .500"OD x 1.000	2
39	3030-140-159	SPRING	2
40	9013-174300	NUT, 7/16-14 NYLON HEX LOCK, ZPS	2
41	9014-113100	WASHER, 5/16 ID X 1/16 THK, FLAT, ZPS	14
42	9014-114300	WASHER, 7/16 ID X 1/16 THK, FLAT, ZPS	4
44	9014-113700	WASHER, 3/8" IDx1"OD, ZPS	2
45	9113-133701	NUT, 3/8-16 HEX HD LO PRO NYLON LOCK, SS	1
46	3030-140-161	DAMPER END FITTING	2
47	9013-173100	NUT, 5/16-18 HEX HD NYLON LOC NUT, ZPS	12
48	9010-103144	SCREW, 5/16-18 x 2 3/4" HEX HD, GR5 ZPS	1
50	9012-103100	NUT, 5/16-18 HEX HD, ZPS	2
53	3030-144-151	BRACKET ASSY, CYLINDER	1
54	3030-135-135	STRAP AND BUCKLE ASSEMBLY	2
55	3097-105-144	SWITCH, DPDT MOM	1
56	3030-140-167	LABEL "HANDLE MUST BE.." (NOT SHOWN)	1

57	3030-140-169	LABEL "UNLOCK / LOCK" W/ ARROWS	1
58	3030-140-165	TREE RIVET, NYLON	4
59	3030-140-171	LABEL "WARNING - STAND CLEAR OF DEVICE..."	1
60	3030-140-172	LABEL "MUST READ BEFORE OPERATING..."	1
61	3030-140-173	LABEL MOUNTING PLATE	1
63	3030-000-109	STOP, CYLINDER	1
64	9010-102512	SCREW, 1/4-20X3/4", HEX HD, FULL THREAD,ZPS	2
65	9112-352500	THUMB NUT,1/4-20 X Ø3/4, SS	2
66	9014-112500	WASHER, 1/4" FLAT, ZPS	4
68	9018-103720	SCREW, 3/8-16 X 1 1/4 HEX HD GR8	1
71	9120-101103	DRIVE SCREW, TYPE U, #4X3/16"	4
72	0000-000-112	LABEL, METAL, S/N	1
73	3030-000-115	LABEL, MEETS AMD STANDARD, KKK SPEC	1
74	3030-140-174	GREASE, SYNTHETIC & OXYGEN COMPATIBLE	A/R
76	3030-135-138	RATCHET STRAP & BUCKLE ASSM	1
78	9014-183100	WASHER, 5/16 FLAT, GR8	12
79	9114-115001	WASHER, .531 IDx1.062OD x FLAT, SS	3
80	0000-000-122	THREAD LOCKER, RED	A/R
81	9010-103112	SCREW, 5/16-18x3/4 HEX HEAD ZPS	2
82	9018-103114	SCREW, 5/16-18x7/8 HEX HEAD ZPS	2
83	9170-001212	COTTER PIN,Ø1/8"x3/4" S/S	1
84	3030-144-133	SPACER, 1/2"OD x 3/8"ID x .406	4
85	3030-144-183	TANK ADAPTER SUPPORT BRACKET	1
86	3030-144-184	SPACER, .516ODx 1 1/4OD x .193 AL	1
87	3030-144-185	SPACER, 11/32ID x 1/2OD x 19-64"LG, BLK NYLON	1
88	3030-144-186	SPACER, 11/32ID x 1/2OD x 7/16"LG, BLK NYLON	1
89	3030-144-187	SPACER, 11/32ID x 1/2OD x 23/32"LG, BLK NYLON	1
90	0000-000-114	TAG, METAL, QR-OTS	1
91	0000-000-186	DOW CORING DOWSIL 732 RTV ADHESIVE SEALANT	A/R
92	9014-263700	WASHER, Ø3/8" EXT TOOTH LOCK, ZPS	1
93	9114-113700	WASHER, Ø3/8" FLAT, SS	1

**Supplied labels:**



Mount near control switch with #10 hardware(not supplied)

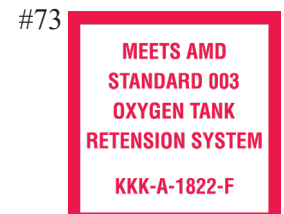
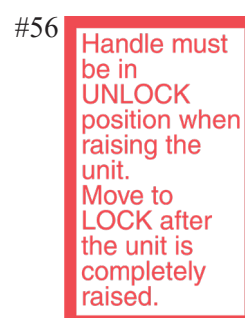


Figure 5  
Page 5

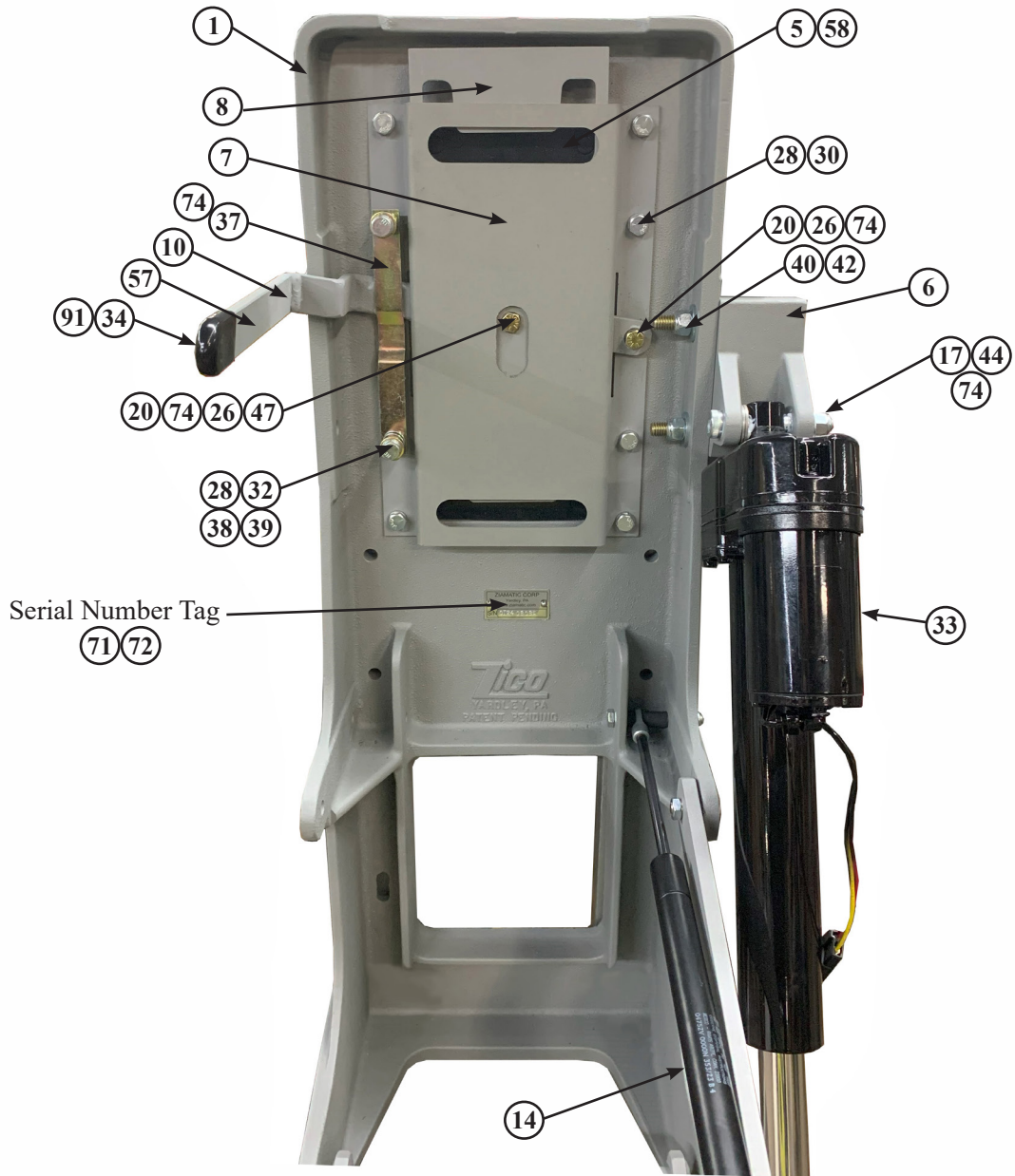


Figure 6  
Motor on right shown

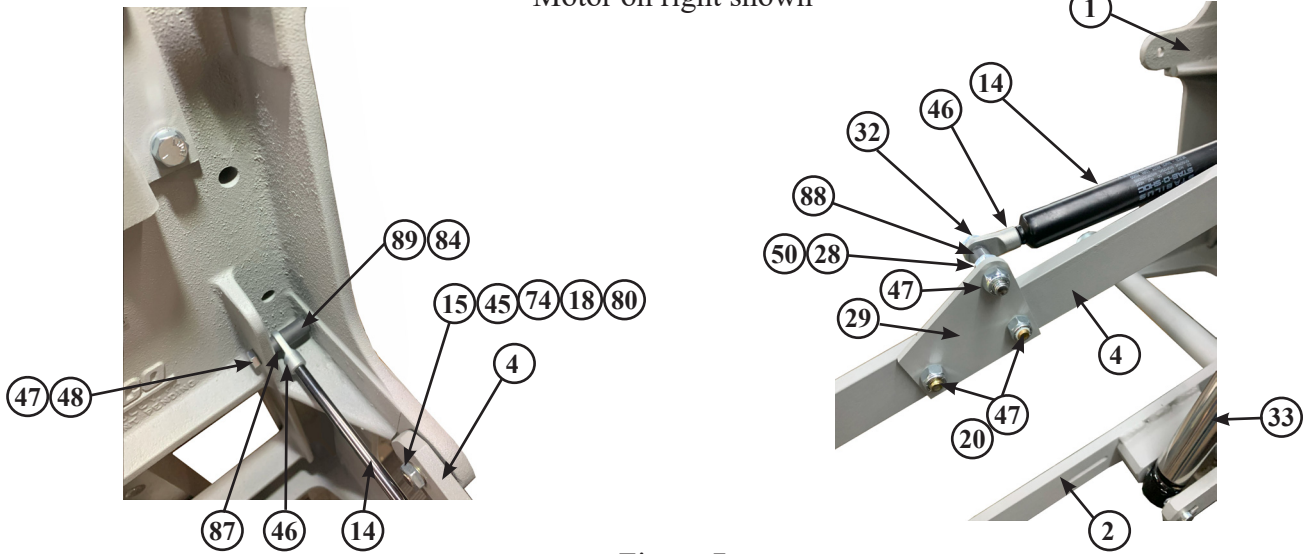


Figure 7  
Page 6

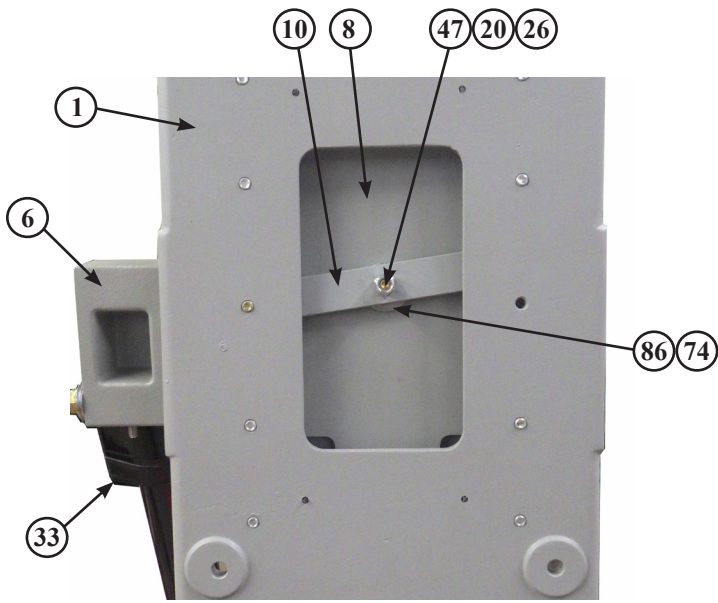


Figure 8

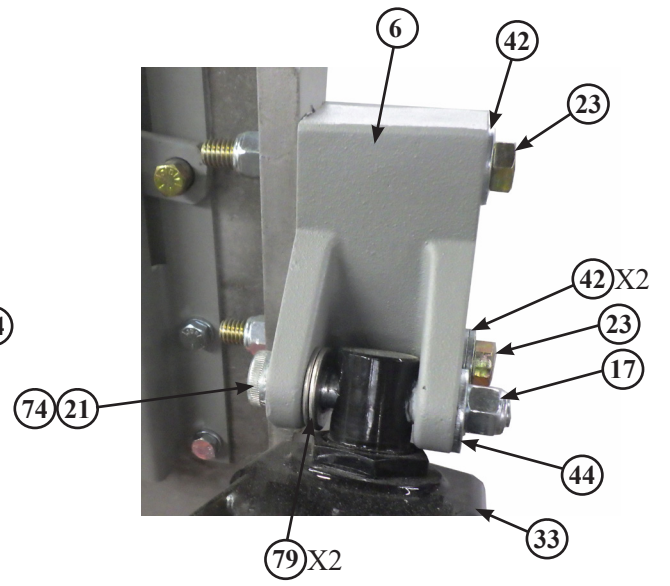


Figure 9

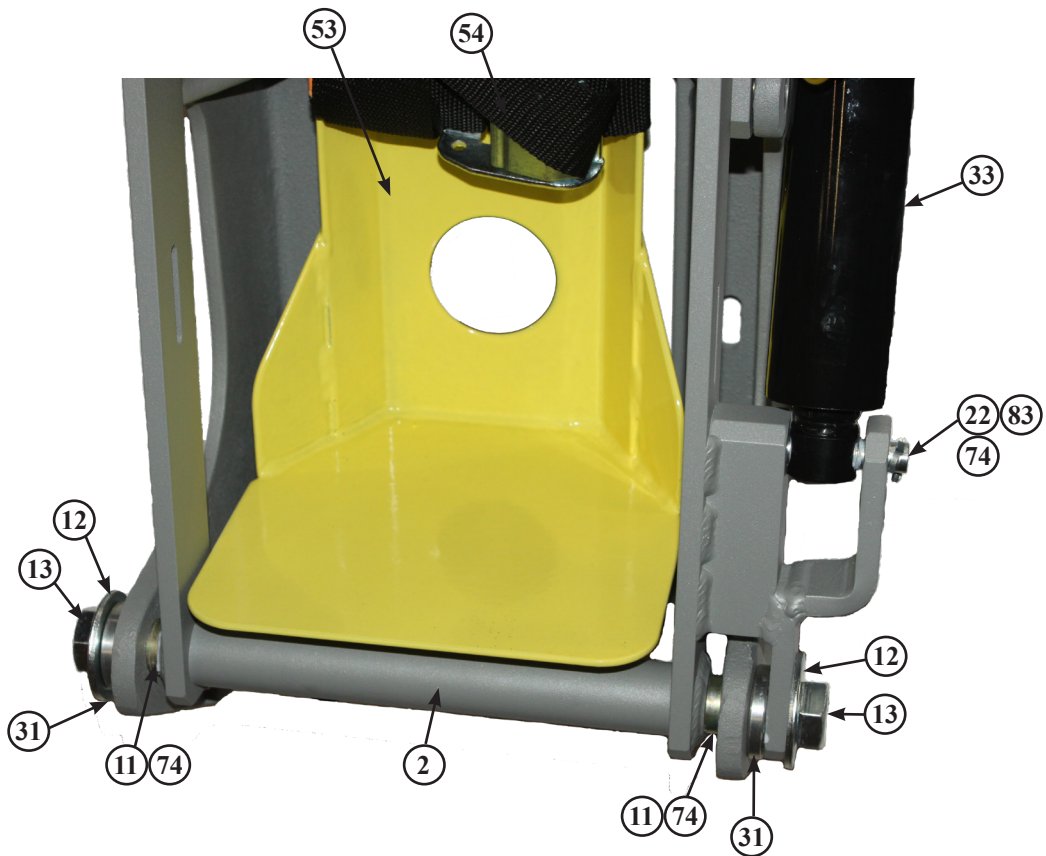


Figure 10  
Page 7

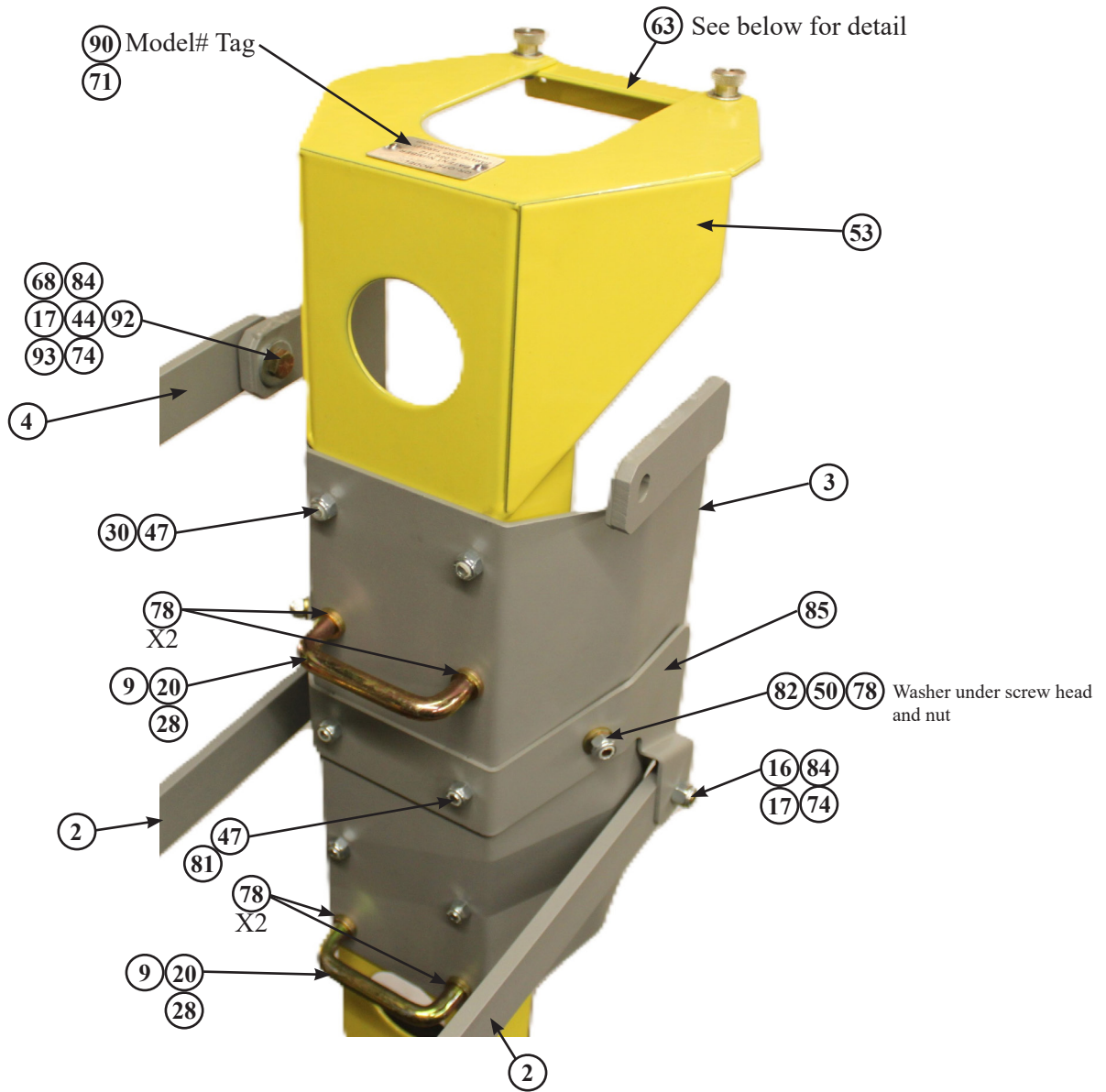


Figure 11

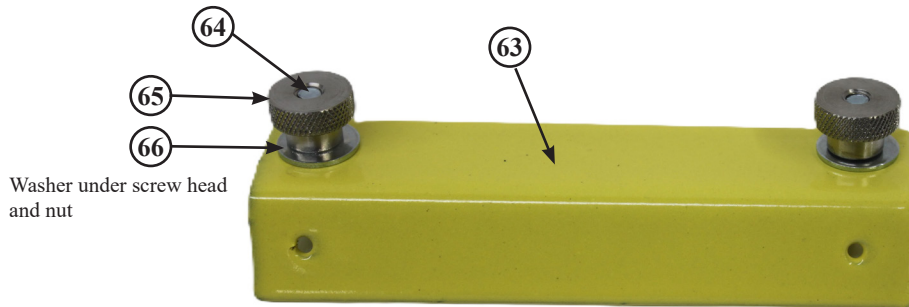


Figure 12



Ziamatic Corp.

10 West College Avenue, P.O. Box 337, Yardley, PA 19067-0587 • (215) 493-3618 • FAX: (215) 493-1401

\*ZICO is a registered trademark for fire, safety and marine products made by Ziamatic Corp.

www.ziamatic.com

TOLL FREE: 800-711-3473

(215) 493-3618 • FAX: (215) 493-1401

Copyright Ziamatic Corp. 1-22